

Port Authority® Ladies Crosshatch Easy Care Shirt L640



With a beautiful two-color weave—not to mention wrinkle resistance—this poplin shirt has a pleasing texture and truly impresses in the office.

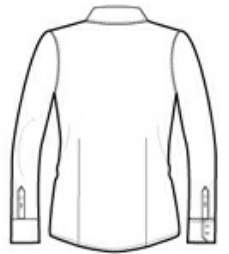
- 3-ounce, 60/40 cotton/poly
- Gently contoured silhouette
- Open collar with Y-shaped slim placket
- Front and back darts
- Pearlized smoke buttons, pearlized white buttons on Chambray Blue, Navy Frost, and Pink Orchid
- Adjustable, button-through sleeve plackets
- Notched cuffs

CARE INSTRUCTIONS

MACHINE WASH COLD WITH LIKE COLORS, ONLY NON-CHLORINE BLEACH, TUMBLE DRY LOW, WARM IRON IF NEEDED

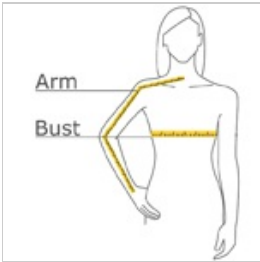


front



back

HOW TO MEASURE



BUST

With arms down at sides, measure around the upper body, under arms and around the fullest part of the bust.

ARM

Place hand on hip. Start at the center of the back of the neck and measure across the shoulder, to the elbow, and then down to the wrist.

SIZE CHART

	XS	S	M	L	XL	XXL	3XL	4XL
Size	2	4/6	8/10	12/14	16/18	20/22	24/26	28/30
Bust	32-34	35-36	37-38	39-41	42-44	45-47	48-51	52-55
Arm	30 - 30 3/4	30 3/4 - 31 1/2	31 1/2 - 32	32 - 32 1/2	32 1/2 - 33	33 - 33 3/8	33 3/8 - 33 3/4	33 3/4 - 34 1/2

COLOR INFORMATION

							
Chambray Blue PMS NO MATCH	Dark Cactus Green PMS 7736 C	Deep Blue PMS 7545 C	Grape Harvest PMS 7666 C	Navy Frost PMS NO MATCH	Pink Orchid PMS 7431 C	Red Oxide PMS 505 C	Soft Black PMS 425 C